

INVERTER

Panasonic®

Operating Instructions Refrigerator



For Household Use

Model No.: **NR-BL268**
NR-BL308
NR-BL348

Contents

• Safety precautions	2
• Usage precautions	3
• Installation	4
• Parts identification	5
• Temperature control	5
• Usage Tips	6
• How to make ice cubes	7
• How to clean the refrigerator	7
• Troubleshooting	9
• Specification	10

■ NON-CFC

This unit uses totally **NON-CFC MATERIALS** both for refrigerant (HFC-134a) and for insulation (Cyclo-Pentane). So, this refrigerator does not damage the earth's ozone layer.

Thank you for purchasing the Panasonic product.

- Please read these instructions carefully and follow safety precautions on page 2-3 before using this product.
- Please make sure the date and name of store of purchase are stamped in warranty card and keep it with this operating instructions.

AS/NZS

ARAH1E200300
P1117-0
Printed in Vietnam

Safety precautions

Please be sure to follow these instructions.



WARNING

This sign means
[It may lead a serious injury or death.]



CAUTION

This sign means
[It may result in injury or property damage.]



These signs mean
prohibited action.



This sign means required action.



This sign means the appliance must be
earthed to prevent electric shock.

Otherwise it may cause a fire,
injury, electrical shock.



WARNING

For power plug and cord...



- Do not plug or unplug with wet hands.
- Do not let the cord or plug be damaged.



- Disconnect power plug when cleaning.
- Plug into a wall outlet of the rated voltage on its own with the rated current and insert plug fully.
- Reserve one socket for the refrigerator only. Avoid connecting many appliances to the same socket and unroll through the length of cord.
- Remove dust periodically from the power plug.
- If the supply cord is damaged, it must be replaced by the manufacturer, its service agent or similarly qualified persons in order to avoid a hazard.
- If you detect burning smell, disconnect the power plug and ventilate the kitchen.
- Stop using the refrigerator and unplug the unit immediately if there is an abnormality or failure. Abnormality and failure examples:
 - Power cord or plug is abnormally hot
 - Power cord is deeply cut or deformed
 - There is burning smell
 - You can feel tingling electricityContact your local dealer immediately for maintenance/repair.

In case of emergency...



- Do not disassemble, repair or modify the refrigerator by yourself. If you want to repair the refrigerator, please consult your dealer or authorized service center.
- Do not use mechanical device or other means to accelerate the defrosting process, other than those recommended by the manufacturer.



- Maintenance work only be carried out at workshop by well-trained Authorised Service Centre Personnel.

To prevent burn...



- Do not touch the compressor and pipes, because of high temperature, that there is a risk of burn injury.

When using...



- Do not damage the cooling circuit (piping on the back.)
- Do not touch compressor or pipe, this area is high temperature.
- Do not let any children hang onto the refrigerator's door, it may overturn.
- Do not place any water container on the top of the refrigerator in case the spilling water causes electrical shock or combustion.
- Do not store explosive substances such as aerosol cans with a flammable propellant in this appliance.



- This appliance is not intended for use by persons (including children) with reduced physical, sensory or mental capabilities, or lack of experience and knowledge, unless they have been given supervision or instruction concerning use of the appliance by a person responsible for their safety.
- Children should be supervised to ensure that they do not play with the appliance.

When recycling the product...



- Before taking the refrigerator to be recycled, please remove all the door opening seal to prevent locking a child in it.
- The warning labels mentioned above should be kept throughout the life of the refrigerator.
- The operating instructions should be handed over to any person who would use or handle the refrigerator whenever the refrigerator would be transferred to another location and delivered to a recycling plant.
- Regarding to local laws, Cyclo-Pentane is used for insulation of this refrigerator. When you throw away this unit, please discard it by proper method and do not dispose it by burning.

When installing...



- Ensure that the refrigerator is plugged into an earthed mains socket. Do not plug into an unearthed mains socket.

Otherwise it may cause injury, accidents.

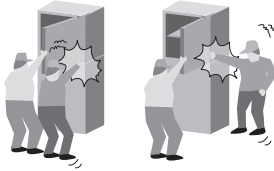


CAUTION

When opening/closing the doors...



- While opening the refrigerator, be careful not to pinch other one's hand holding the door.
- Mind the gap between the doors. They may nip your hand while closing the door.



When storing food...



- **Do not** freeze glass bottles, as there is a risk of injury. (If the liquid in a glass bottle is frozen, then the bottle may break and you may be injured.)
- **Do not** add a high impact on glass trays. (Otherwise those glass trays may break and you may be injured.)



When moving the refrigerator...



- Hold the refrigerator tightly when transporting.
- Apply protective covering, etc. to floors with a fragile surface.



Usage precautions

When opening/closing the doors...

- **Do not** refrigerate items which are bigger than tray or shelf, as the door will not close completely causing leakage of cool air.
- **Do not** open refrigerator frequently or leave it open for long time in order to prevent water dripping inside and waste energy.
- Frequently check the door opening seal, it must be closed to the refrigerator's body completely.

When cleaning...

- **Do not** clean the refrigerator with chemical substances. It may cause damage (cracking) of internal surfaces and corrosion on external surfaces.
- Clean the pan water evap located over the compressor at the back of the refrigerator every three months to prevent the odour generated from



When using...

- When the plug is disconnected, leave it for 5 minutes before plugging again. If not, the compressor may not work.
- Adjust the temperature according to the actual operating condition for energy saving.
- If you will not be at home for several days and there are nothing refrigerated in the refrigerator, the plug should be disconnected for energy saving.
- The outside wall of refrigerator cabinet may sometimes get warm, especially just after installation. This is quite normal, and is due to the built-in Mullion Dryer Pipe which prevents sweating and radiates heat.
- When humidity is high, e.g. during rainy-season, condensation may appear on the surface of cabinet, especially around the door seal gasket. Wipe off the condensed water with a clean cloth.
- The humidity inside the fresh case may condense so wipe it with a cloth periodically. Clean the fresh case once a month.



When storing food...

- **Do not** place warm/hot foodstuff in the refrigerator.
- **Do not** overload the refrigerator. Gap must be provided between foodstuffs to maintain the cooling effect.
- Store fruits and vegetables in vegetable case, where trapped moisture helps preserve food quality for longer time periods.
- Drinking water, beverage bottles should be sealed to prevent the odor contamination.
- Foodstuff such as vegetable, fruits and fresh food should be wrapped or pack in box before freezing and refrigerating.
- Put the food such as meat or fish in the freezer if you want to store for an extended period.
- Cool hot dishes to room temperature before placing them in your refrigerator.
- Cover juicy foods with tight lids, plastic film or foil.
- **Do not** keep the door open any longer than necessary, particularly in hot, humid weather.



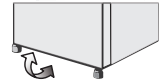
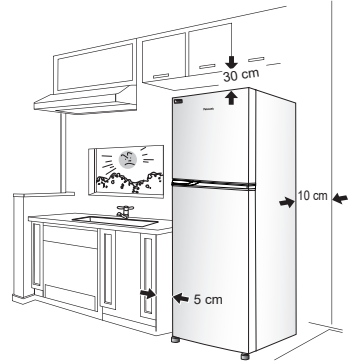
Installation

The distance from the wall is installed

- The top of the refrigerator and the ceiling at least 30 cm.
- The back of the refrigerator and the wall at least 10 cm.
- The side of the refrigerator and the wall at least 5 cm.

Area around installed

- **Do not** locate the refrigerator in a humid place as rust may form and may cause electric leakage.
- **Do not** locate the refrigerator exposing to direct sunlight as the heat and sunlight will increase the temperature.
- **Do not** locate the refrigerator near heat source such as cooking stove or oven.
- **Do not** block the openings around the refrigerator.
- The refrigerator must be located in the place where there is good air circulation.
- In case of placing the refrigerator on an uneven surface, adjust the adjustable bolt to make the refrigerator stands stably.



Moving or shifting

- When moving or shifting the refrigerator, remove ice cube tray, box ice tray, chilled case, pan water evap etc. and check to be sure that there is no water in the refrigerator.
- Transport in vehicle in an upright position.

Power cord setting

- To bring power cord for use, pan water evap from left should be lifted up. Then bring the power cord out and then insert pan water evap into the block by pressing at both the sides.

LED lamp and Grounding

- The refrigerator LED lamp, specially designed for this refrigerator, and is not User replaceable. If you need replacement, please contact Panasonic Authorised Service Center.
- If there is no grounding wiring plug in refrigerator, it should be connected with grounding connection to prevent electrical hazard.

SPECIAL FEATURE

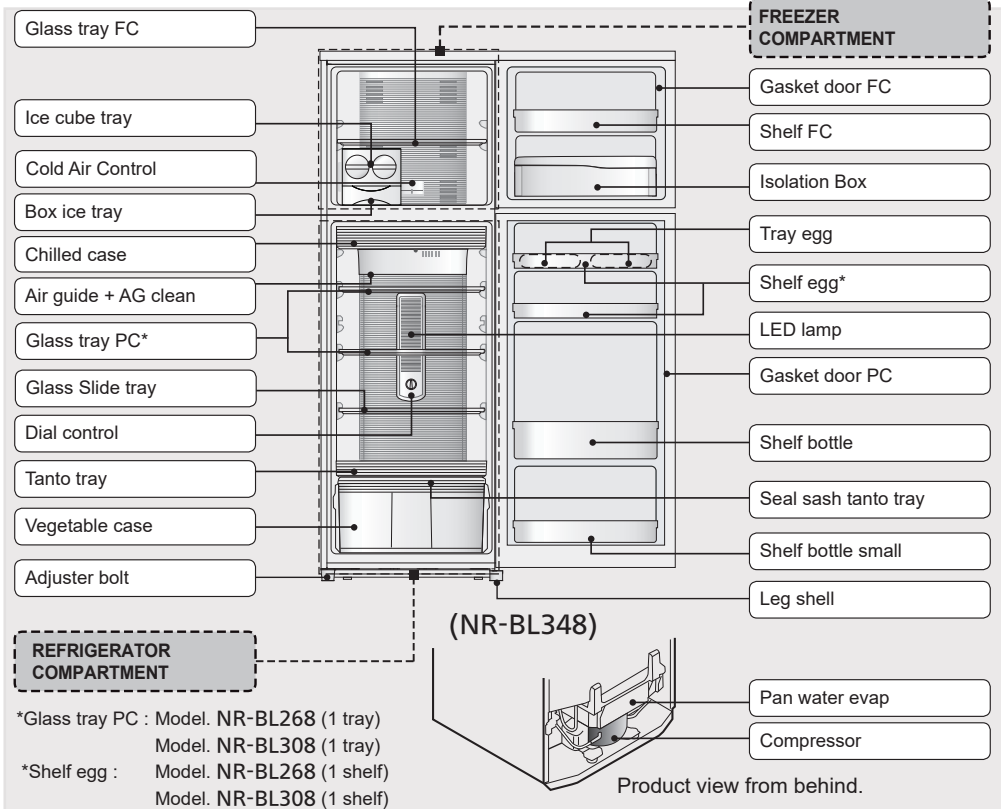
1) ECONAVI

The microchip performing ECONAVI mode is integrated into the main control board. By detecting refrigerator's frequency of use (opening and closing of door), ECONAVI mode automatically operates to save energy.

2) INVERTER

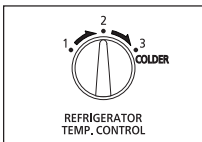
In accordance with temperature change inside the compartment, the motor runs at different speed. When the temperature is stable, the motor runs at a lower speed (energy saving & lower noise). When powerful cooling is required, the motor runs at a higher speed.

Parts identification



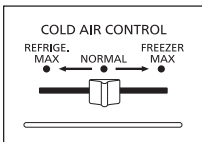
Temperature control

Operate the REFRIGERATOR TEMP. CONTROL when changing the temperature of REFRIGERATOR COMPARTMENT.



TEMP. CONTROL REFRIGERATOR COMPARTMENT	
"1"	Higher than "2" by approximately 2°C ~ 3°C
"2"	Approximately 3°C ~ 5°C
"3"	Lower than "2" by approximately 2°C ~ 3°C

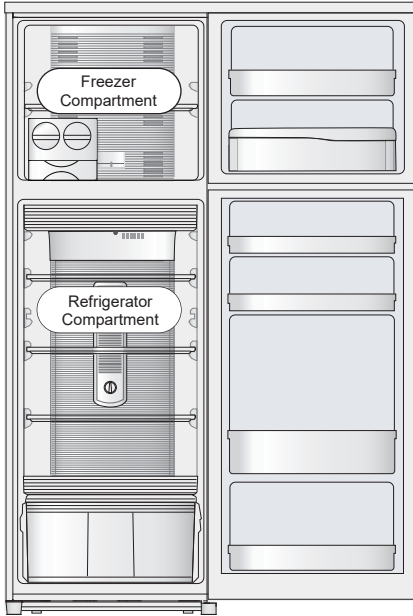
Operate the COLD AIR CONTROL when changing the cold air condition.



COLD AIR CONTROL	
"REFRIGE. MAX"	REFRIGERATOR COMPARTMENT takes priority.
"NORMAL"	Cold air condition is normal.
"FREEZER MAX"	FREEZER COMPARTMENT takes priority.

Note: Temperature of Refrigerator depends on environment, room temperature and food storage quantity.

Usage Tips



(NR-BL348)

Freezing

“If storing food for an extended period...”
For storage of frozen or dried foods.



Isolation Box

For storage of food with smell in order to prevent smell from spreading around within the Freezer compartment.

Refrigeration

“Food and drinks readily served”
For regular storage of food and drinks or temporary storage of those to be served soon.



Chilled case

Special zone to store dairy or daily food.

Vegetable case

“Fruits and vegetables”
A rather high humidity keeps fruits and vegetables fresh and juicy.



Storage using hermetically sealed containers is recommended!

To prevent the interior from being discolored!



- Cut citrus fruits
(→ The plastic will be discolored white.)

To prevent odors from spreading!

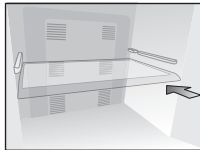
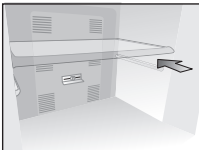


- Garlicky or other strong smelling vegetables
(→ Odors will spread to other nearby food.)

Adjusting tray FC / PC

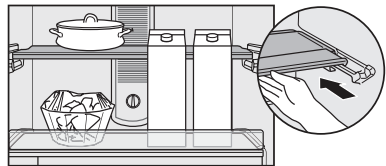
Tray FC / PC can be adjusted to the top or to the bottom as illustrated below.

- When adjusting trays FC / PC to the top.
- When adjusting trays FC / PC to the bottom.



Adjusting slide tray

- This refrigerator is specially designed for appropriate use, which can adjust the tray level to 2 levels with the following picture.



How to make ice cubes

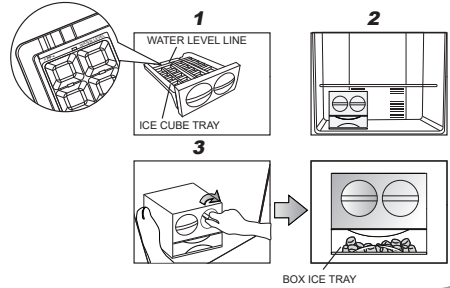
STEP

1. Fill water in the ice cube tray till the water level line.
2. Put ice cube tray inside freezer, wait until ice is made.
3. To remove ice cubes, suppress the frame with left hand and twist the dial ice cube tray clockwise with right hand.

The ice cubes will drop into the box ice tray.

Remark:

- Don't pour water into ice box for ice-making, otherwise the box may crack.



How to clean the refrigerator

- 1 **Interior cleaning**
Wipe off the stain with warm water. When stains can not be removed easily, wipe them with warm water and mild liquid soap by using a soft cloth.
Then wipe the soap off using damp soft cloth.

- 2 **Exterior cleaning**
Cleaning by using soft cloth with warm water and soap.
Then wipe off the soap with warm soft cloth.

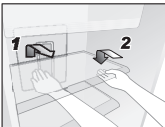
- 3 **Gasket door FC/PC**
 - Clean by wiping gently. This area, petroleum gel was applied to reduce the friction to the refrigerator body. Be careful not to wipe off them.
 - The door opening seal is replaceable when reaching end of life.
 - While cleaning, push it back to the groove if it comes off.



Note: Do not use the following items. (Otherwise, the surface will be scratched.)



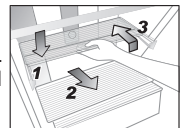
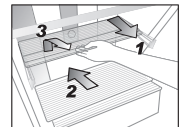
Glass trays FC / PC



- **Removing**
 1. Unhook the protrusion at the back by lift it upward and pull the tray outward until removing.
- **Attaching**
 2. Push the tray until it reaches the end lock.

Glass Slide tray

- **Removing**
 1. Pull the front slide tray outward until it reaches the end.
 2. Push the front slide tray downward the back tray until it reaches the end.
 3. Raise both the trays up and take them out.
- **Attaching**
 1. Place two trays on both supporters.
 2. Pull the lower slide tray upward and outward until it reaches the end.
 3. Raise the front slide tray up and push it backward until it reaches the end.

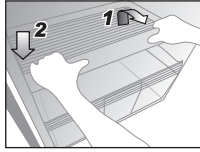


How to clean the refrigerator

Tanto tray

• Removing

1. Raise up the front of tanto tray a bit and pull the tanto tray outward until removing.



• Attaching

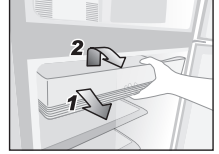
2. Place it on both supporters until it reaches the end lock.

Note: When removing tanto tray above vegetable case, please pull out the vegetable case first (please following as below) and then follow to removing the tanto tray as above details.

Chilled case

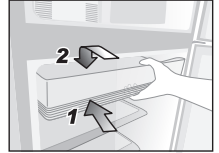
• Removing

1. Pull the case until it reaches the end of stopper.
2. Raise up the front of case a bit and then completely take out.



• Attaching

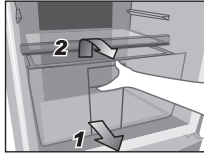
1. Put the case on both supporters.
2. Push the case until it reaches the end.



Vegetable case

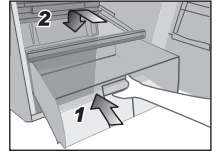
• Removing

1. Pull the case until it reaches the end of stopper.
2. Raise up the front of case a bit and then completely take out.

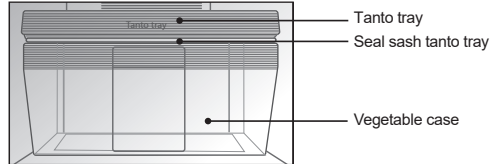


• Attaching

1. Put the case on both supporters.
2. Push the case until it reaches the end.



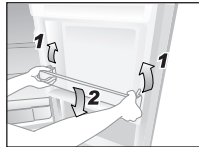
Note: To keep vegetable and fruit and to maintain its vitamins, please setup seal sash tanto tray always in correct position inside vegetable case.



Shelf FC, Shelf egg, Shelf bottles, Isolation box

• Removing

1. Hold the shelf and the isolation box with both hands and then lift it up.



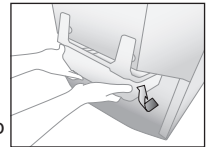
• Attaching

2. Place it on both supporters, and then press until it reaches the end of supporters.

Pan water evap

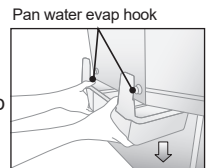
• Removing

1. Tilt up the pan water evap a bit and then lift it upward until the pan water evap hole unlock from the pan water evap hook.
2. Take the pan water evap out.



• Attaching

1. Insert the pan water evap hole into the hook pan water evap as well as press to fitting both sides.



Troubleshooting

Before you call for service, please check the following items:

The refrigerator does not operate.

- Check that the plug and its socket are in good condition.
- Check if there is any problem on main fuse and electrical system of the house.
- Check by unplug and wait for 5 minutes before plugging it back in.

The refrigerator does not cool enough.

- Check to be sure that the temperature control dial is at proper position.
- Check to see if the refrigerator is overloaded with stuff or there is any hot foodstuff refrigerated inside.
- Is the refrigerator exposed directly to sunlight or heat source?
- Is the refrigerator door completely closed?
- Is the refrigerator door opened frequently?

Dew, snow appear.

Outside

- When the ambient humidity is too high, the door gasket may have dew. This situation will be stopped if the air humidity decreases. Please wipe it up with dry cloth.

Inside

- Is the door closed firmly?
- Is the door being opened and closed too frequently?
- When too high weather humidity, long opening time or making too much ice, inside the freezer compartment may appear frozen snow. This is normal. Please wipe with dry and soft cloth.

The refrigerator makes noise.

- Check if the refrigerator is located on a stable floor or is installed properly.
- Check if there is any object in contact with the refrigerator.

Food becomes frozen.

- Do you put the food near cold air duct?
- Do you adjust the temperature control at "Max"? Adjust to "Min"?
- Do you put food in chill case?

The inside is smelling.

- Do you store food with dry odor without wrapping it?

The surfaces of the refrigerator is hot.

- Because the refrigerator is equipped with the dew prevention and heat radiation tubes, the surfaces of the refrigerator get warmer when operating.
- The back and side plates may get warmer especially when starting up or if the door is frequently opened and closed.

The normal sounds of refrigerator.

- When the refrigerator starts operation, the sound like water flowing and boiling water is created. This is the sound of the cooling liquid.
- The noise is generated when the automatic defrost system operated.
- The thermal expansion of the parts inside the refrigerator in the cooling process can cause sound "crack-crack".
- You may feel that the operation sound is larger to higher because the compressor operates in high-speed under the following conditions: the refrigerator does not cool fully on the occasion such as using it for the first time, opening/closing the door too frequently, the surrounding temperature is high. The sound becomes more quiet after cooling fully.

Lamp does not turn on.

- Please contact Panasonic Authorised Service Centre.



